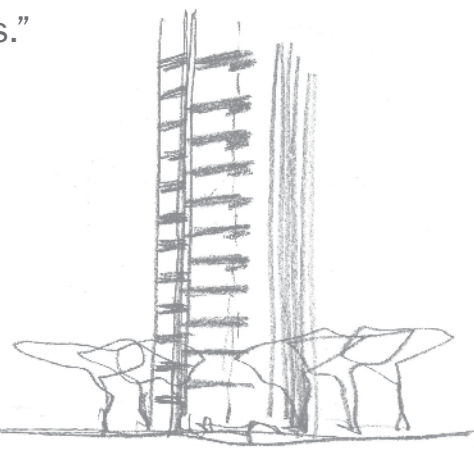


A Partnership of Inspiring *Minds*

The Maestro

be/hind
The Masterpiece

“At 3 Orchard By-The-Park, I have created a design experience that harmonises all the elements.”



Antonio Citterio

The Italian master, Antonio Citterio, an established architect and industrial designer, whose works has brilliantly stood the test of time and showcased in all corners of the globe, his worldwide success includes twenty ‘Red dot’ and ‘Compasso d’Oro’ awards. Now, his brilliance has been tapped to conceive a living work of art right in the heart of Orchard Road, 3 Orchard By-The-Park. The opportunity of a lifetime to own the work of a master recognised as the new standard of design excellence.



Tan Sri Francis Yeoh

In YTL, design is much more than mere art form but also the subtle merging of great minds and innovative solutions to elevate the art of living every day. Individuality, of course, is paramount in the creation of a home and few developers consider this as carefully as Tan Sri Francis Yeoh does.

The Managing Director of YTL Corporation Berhad, Tan Sri Francis Yeoh took over the running of his family company in 1988 and grew it into a global infrastructure development conglomerate with core businesses in luxury property and hotel development, leisure travel, construction, power generation and utilities.

Ranked as one of “Asia’s 25 Most Powerful and Influential Personalities” by Fortune and Business Week, he advocates Godly stewardship of business. He is also on the Advisory Councils of London Business School, Wharton School and INSEAD. His numerous awards include the Commander of the Most Excellent Order of the British

Empire (CBE) by Her Majesty Queen Elizabeth II for his relentless support in environmental conservation and the Capri Legend Humanitarian Award for his philanthropic work in the arts.

Its property development arm, YTL Land & Development Berhad has built up an excellent award-winning portfolio of luxury projects that are “Designed by Masters, Built as Masterpieces”.

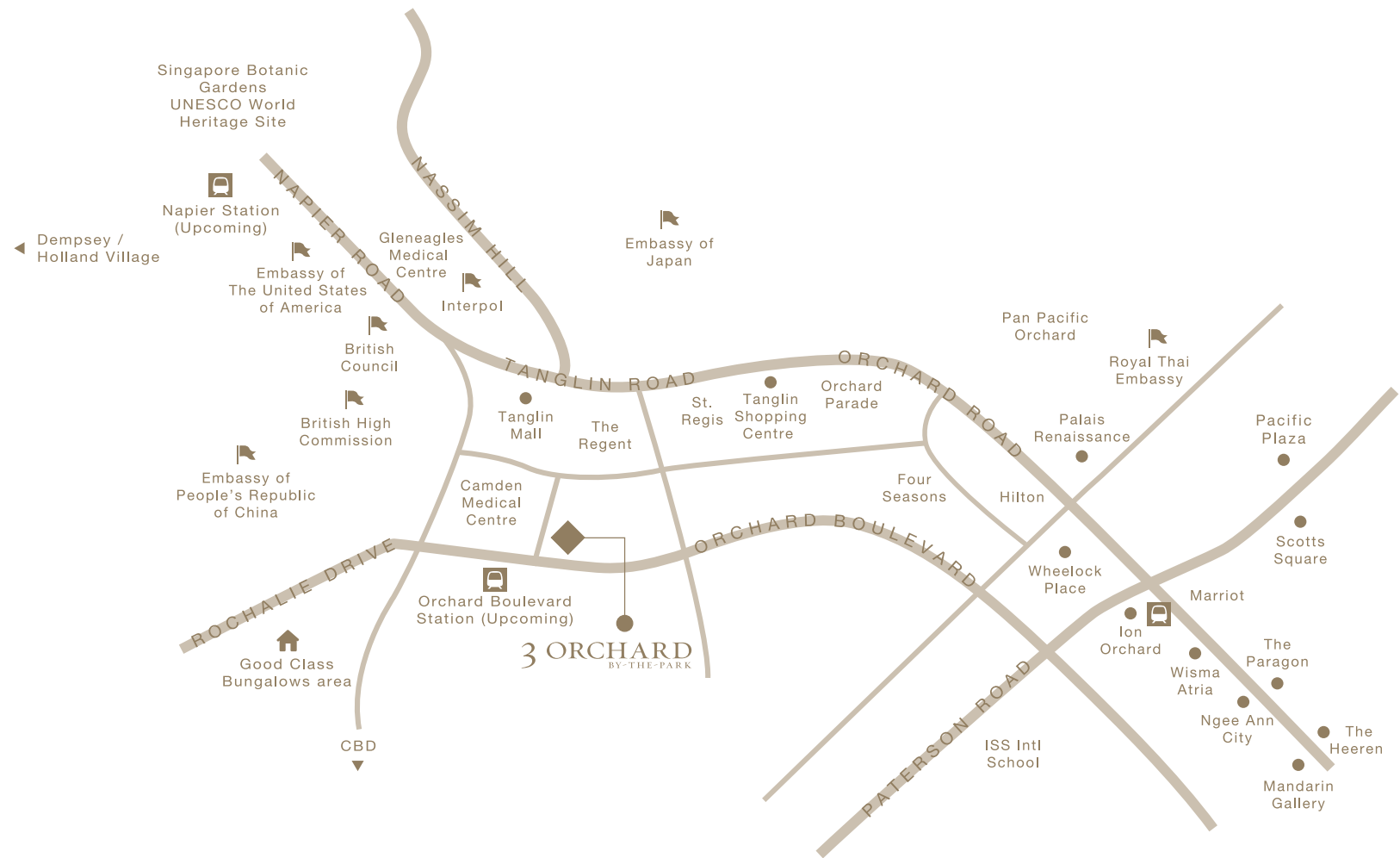


Antonio Citterio



A Landmark Above The Pulse Of A Global Metropolis

When location is everything, 3 Orchard By-The-Park puts you in the epicenter of cosmopolitan Singapore. Living within the ultra-luxury residential enclave that includes the prestigious Embassy Row, the prime address of District 10 is yours to call home. Just a mere few minutes stroll is the Orchard Boulevard MRT Station and the 82-hectare Singapore Botanic Gardens, a UNESCO World Heritage Site. With the city's luxury brand flagship stores, international hotels, medical centres, cafes and restaurants, and a botanic garden all within walking distance, the world does revolve around you.





Designed
by Masters.
Built as
Masterpieces.



Immerse In Pure Luxury

Imagine home is an Italian masterpiece, a bold sculptural statement by Antonio Citterio against a flourishing backdrop in the heart of Orchard Road. With only three 25-storey towers, 3 Orchard By-The-Park rises above the most celebrated shopping district. Like all avant-garde creations, they push the envelope of architectural design. The freehold development houses only 77 exclusive residences. The ultimate urban retreat set on a sprawling estate of lush greenery to dwell in intimacy.

A designer library lounge that combines relaxation with personal growth and is a reflection of Antonio Citterio's approach to elegance and style. Life at 3 Orchard By-The-Park is as much about the spaces and facilities outside your home as inside. Unified by Antonio Citterio's creative vision, living and communal spaces

connect seamlessly to timber-decked outdoor cabanas where lush landscaped environment rejuvenates body and mind. Nestled within one of the lower terraces, the outdoor lounge offers respite at day's end to wine and unwind. There's also an infinity edge pool that boasts an internal Jacuzzi to give those tired muscles a workout. Here, you'll appreciate a level of planning capturing the beauty of its surrounding - a world of picturesque calm that provides the perfect balm for all the senses.



Stature In The Sky

Every Inch A Masterpiece



This living work of art is a beacon to those seeking the pinnacle of design and craftsmanship. Each ‘villa-in-the-sky’ opens up to spectacular views of vibrant greenery and copious landscapes – wood, wilderness, parkland – to experience the cosmopolitan with a sense of calm. Antonio Citterio’s masterpiece residences are characterised by interiors with generous

proportions and highly versatile layouts. Every step of each resident’s journey, from the lobby to their own residences, is meticulously choreographed to achieve the most welcoming and gracious flow.



The signature touch of Antonio Citterio is everywhere. The elegance and simplicity of every creation belies the strength of its functionality. Rigorous selection of superior materials and premium fittings deliver quality and durability. Even the cabinetry and luxury kitchen timber boiserie panels are exquisitely handcrafted to bear the mark of excellence that can never be replicated.

Site Plan

Schematic Chart



		Jacuzzi & Roof Terrace				M&E Services				Pool & Roof Terrace					
Lower Roof		PH-AC (#25-01)		Pool + Balcony		B ₂ -C (#25-02)		Balcony		PH-AB (#25-03)		Balcony			
25th Storey		B ₁ -a ₅ (#23-01)		C ₁ -C ₄ (#22-01)		B ₂ -a ₃ (#24-02)		Balcony + Garden		C ₂ -b ₂ (#23-03)		Balcony			
24th Storey						B ₂ -b ₃ (#23-02)		Balcony				Balcony			
23rd Storey		Balcony		C ₁ -C ₃ (#20-01)		B ₂ -a ₃ (#22-02)		Balcony + Garden		C ₂ -b ₂ (#22-03)		Balcony			
22nd Storey		B ₁ -a ₅ (#21-01)				B ₂ -b ₃ (#21-02)		Balcony		C ₂ -b ₂ (#21-03)		Balcony			
21st Storey		Balcony		C ₁ -C ₂ (#18-01)		B ₂ -a ₃ (#20-02)		Balcony + Garden		C ₂ -b ₂ (#20-03)		Balcony			
20th Storey		B ₁ -a ₅ (#19-01)				B ₂ -b ₃ (#19-02)		Balcony		C ₂ -b ₂ (#19-03)		Balcony			
19th Storey		Balcony		C ₁ -C ₁ (#16-01)		B ₂ -a ₂ (#18-02)		Balcony + Garden		C ₂ -b ₁ (#18-03)		Balcony			
18th Storey		B ₁ -a ₄ (#17-01)				B ₂ -b ₂ (#17-02)		Balcony		C ₂ -b ₁ (#17-03)		Balcony			
17th Storey		Balcony		C ₁ -b ₄ (#14-01)		B ₂ -a ₂ (#16-02)		Balcony + Garden		C ₂ -b ₁ (#16-03)		Balcony			
16th Storey		B ₁ -a ₄ (#15-01)				B ₂ -b ₂ (#15-02)		Balcony		C ₂ -b ₁ (#15-03)		Balcony			
15th Storey		Balcony		C ₁ -b ₃ (#12-01)		B ₂ -a ₂ (#14-02)		Balcony + Garden		C ₂ -b ₁ (#14-03)		Balcony			
14th Storey		B ₁ -a ₃ (#13-01)				B ₂ -b ₂ (#13-02)		Balcony		C ₂ -b ₁ (#13-03)		Balcony			
13th Storey		Balcony		C ₁ -b ₃ (#10-01)		B ₂ -a ₂ (#12-02)		Balcony + Garden		C ₂ -b ₁ (#12-03)		Balcony			
12th Storey		B ₁ -a ₃ (#11-01)				B ₂ -b ₂ (#11-02)		Balcony		C ₂ -b ₁ (#11-03)		Balcony			
11th Storey		Balcony		C ₁ -b ₂ (#08-01)		B ₂ -a ₂ (#10-02)		Balcony + Garden		C ₂ -b ₁ (#10-03)		Balcony			
10th Storey		B ₁ -a ₂ (#09-01)				B ₂ -b ₂ (#09-02)		Balcony		C ₂ -a (#09-03)		Balcony			
9th Storey		Balcony		C ₁ -b ₁ (#06-01)		B ₂ -a ₁ (#08-02)		Balcony + Garden		A ₁ (#08-04)		A ₂ -c (#08-03)			
8th Storey		B ₁ -a ₁ (#07-01)				B ₂ -b ₁ (#07-02)		Balcony		A ₁ (#07-04)		A ₂ -b (#07-03)			
7th Storey		Balcony		C ₁ -b ₁ (#04-01)		B ₂ -a ₁ (#06-02)		Balcony + Garden		A ₁ (#06-04)		A ₂ -c (#06-03)			
6th Storey		B ₁ -a ₁ (#05-01)				B ₂ -b ₁ (#05-02)		Balcony		A ₁ (#05-04)		A ₂ -b (#05-03)			
5th Storey		Balcony		C ₁ -a (#02-01)		B ₁ -a ₁ (#04-02)		Balcony + Garden		A ₁ (#04-04)		A ₂ -c (#04-03)			
4th Storey		B ₁ -a ₁ (#03-01)				(Void)				A ₁ (#03-04)		A ₂ -b (#03-03)			
3rd Storey										A ₁ (#02-04)		A ₂ -a (#02-03)			
2nd Storey		G ₁ (#01-01)		Pool		G ₂ (#01-02)		Pool		Library Lounge					
1st Storey															
Water Tower				Wilderness Tower				Wood Tower							



WOOD

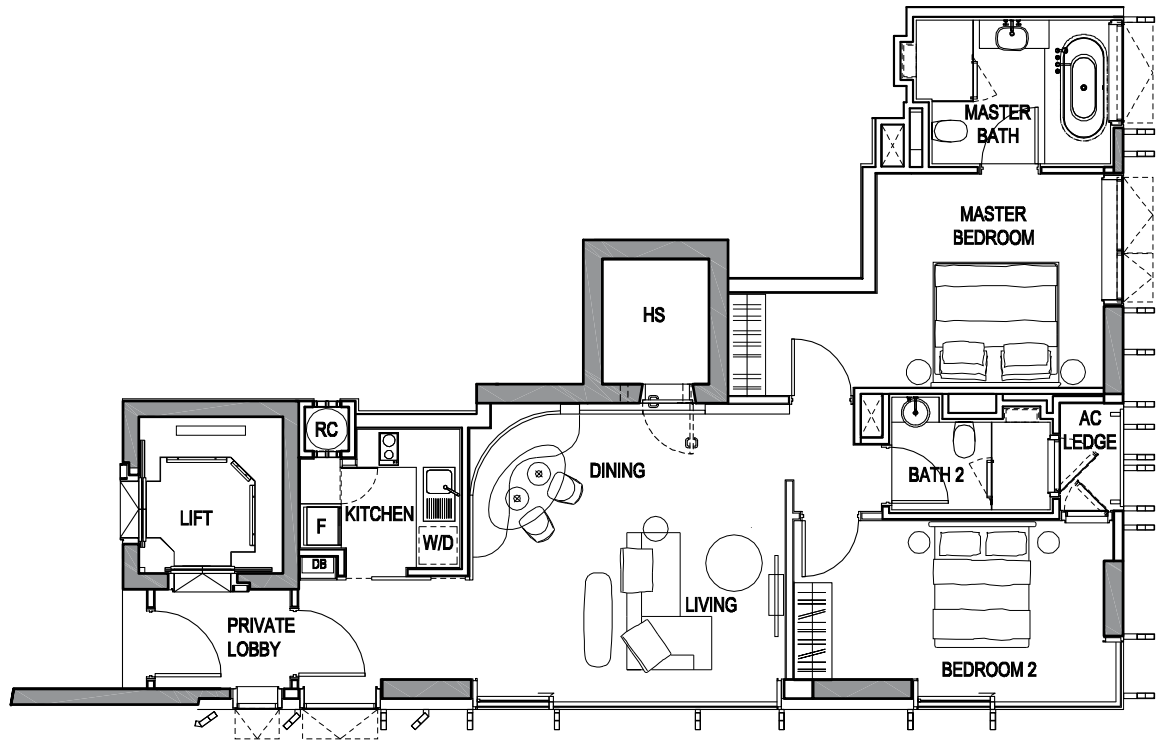
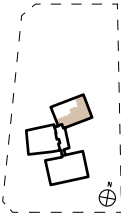
When your living spaces are as open and panoramic as your views, it is easy to forget that you are living in the centre of the city. Designed to enrich your senses, the surrounding woodland garden landscape creates a picture of harmony in the choicest residential acreage in Singapore. Artfully unconventional, the Wood Tower juxtaposes the rawness of materials with the warmth and sophistication of effortless luxury.

2-Bedroom

Type A1

Area: 99 sq m / 1,066 sq ft

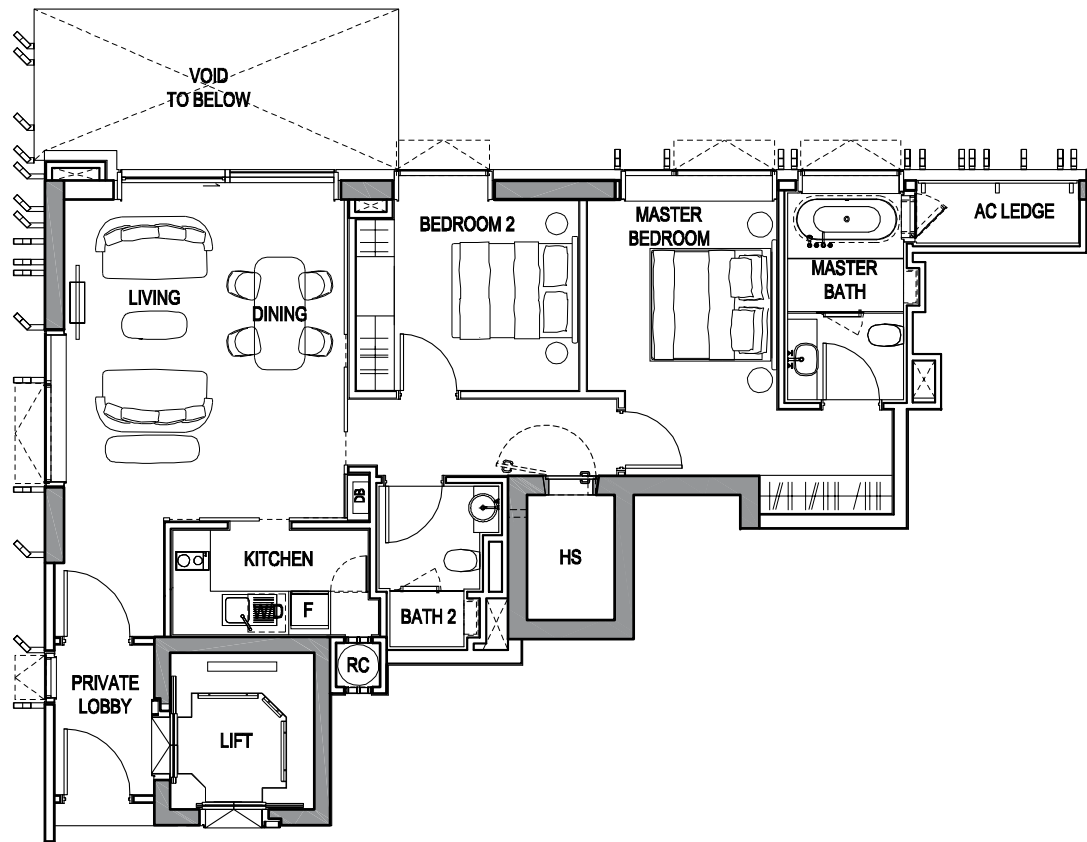
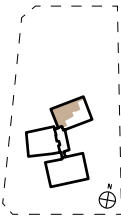
#02-04 to #08-04



Type A2-a

Area: 99 sq m / 1,066 sq ft

#02-03

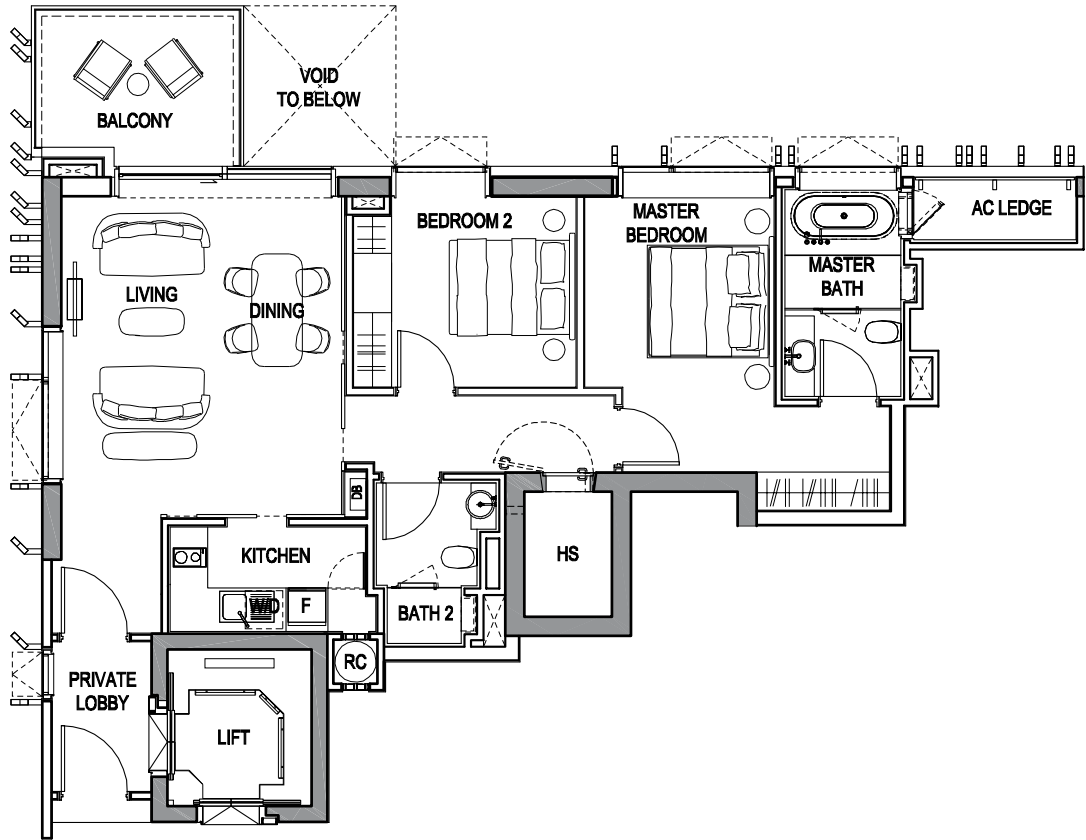
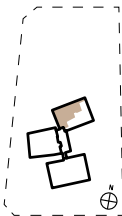


2-Bedroom

Type A2-b

Area: 108 sq m / 1,163 sq ft

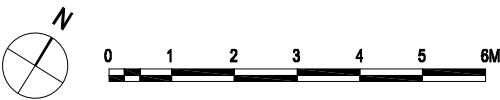
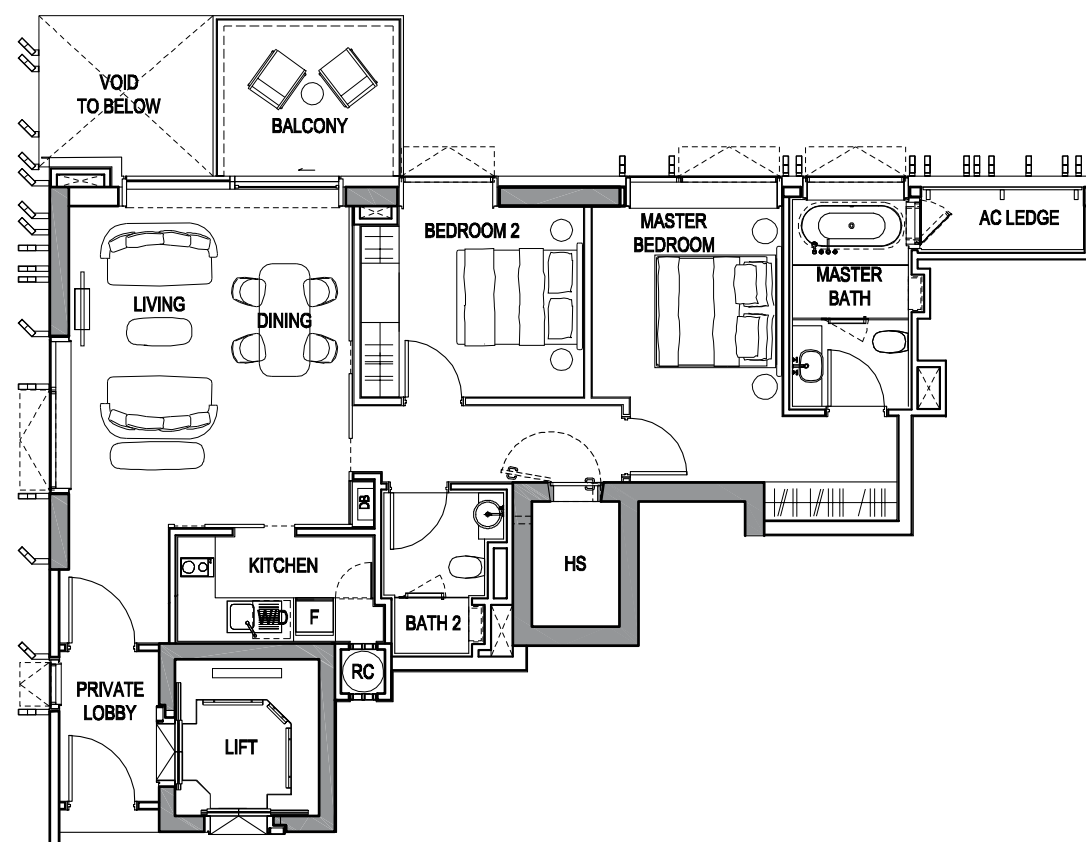
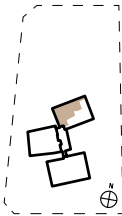
#03-03, #05-03, #07-03



Type A2-c

Area: 107 sq m / 1,152 sq ft

#04-03, #06-03, #08-03

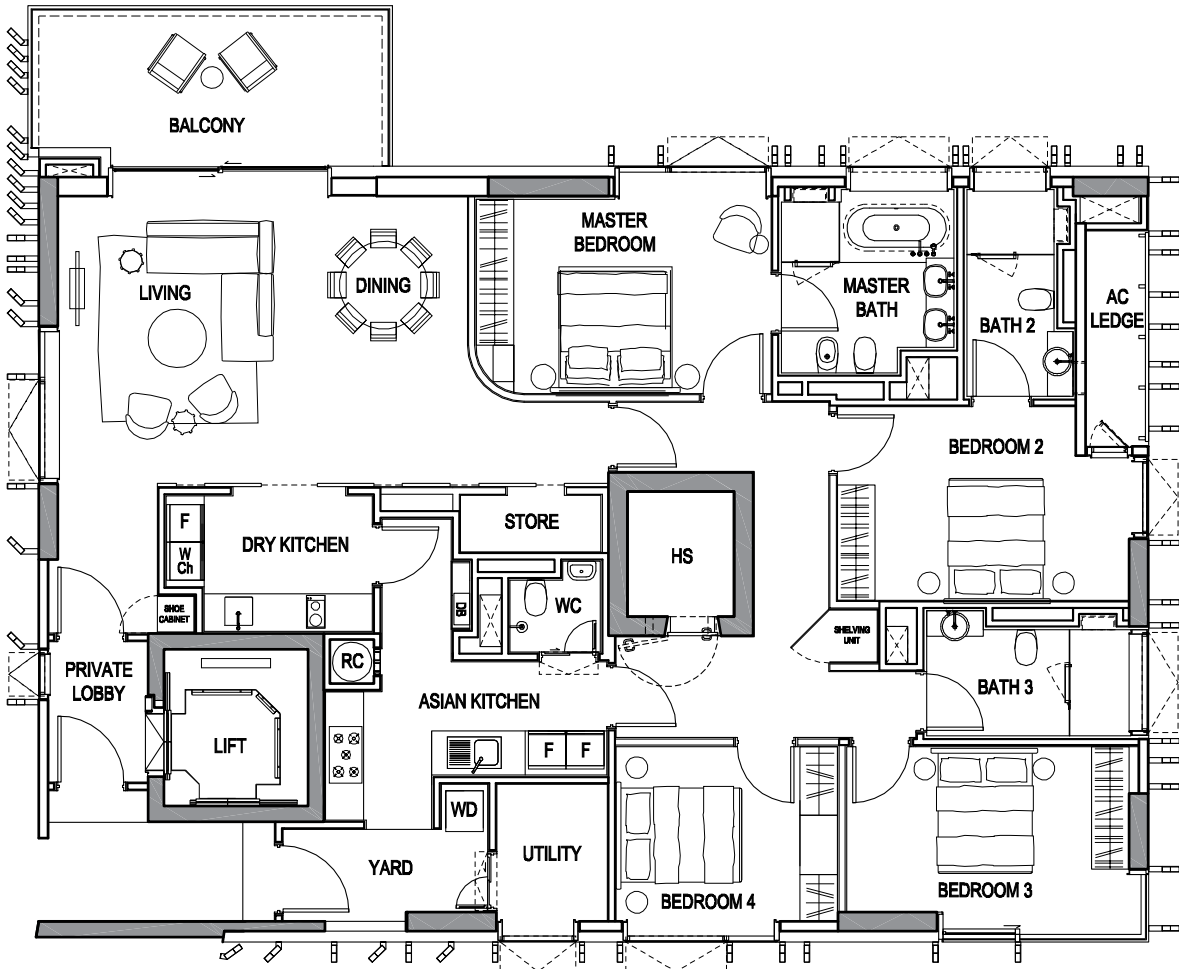
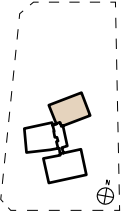


4-Bedroom

Type C2-a

Area: 210 sq m / 2,260 sq ft

#09-03

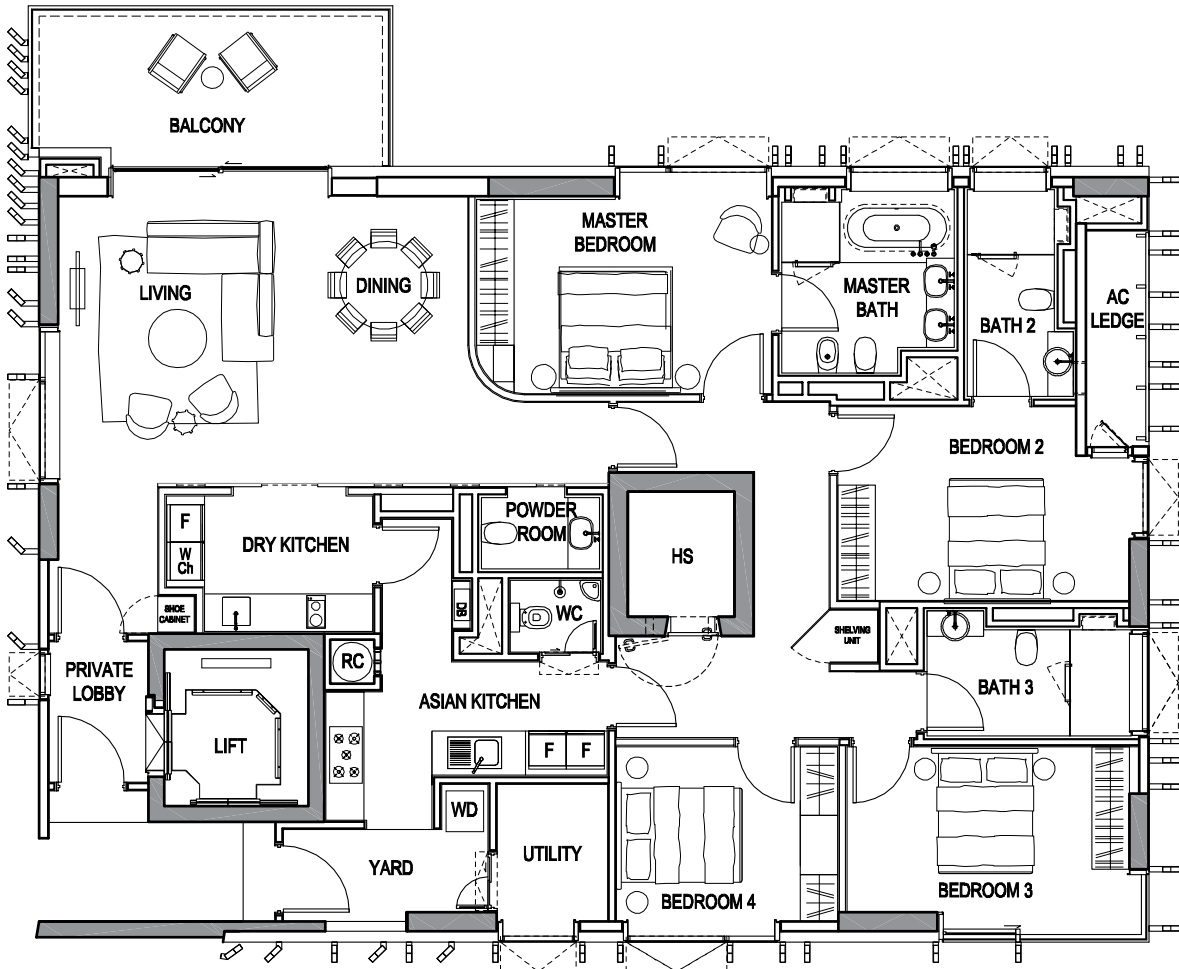
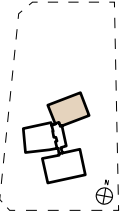


4-Bedroom

Type C2-b1

Area: 210 sq m / 2,260 sq ft

#10-03 to #18-03

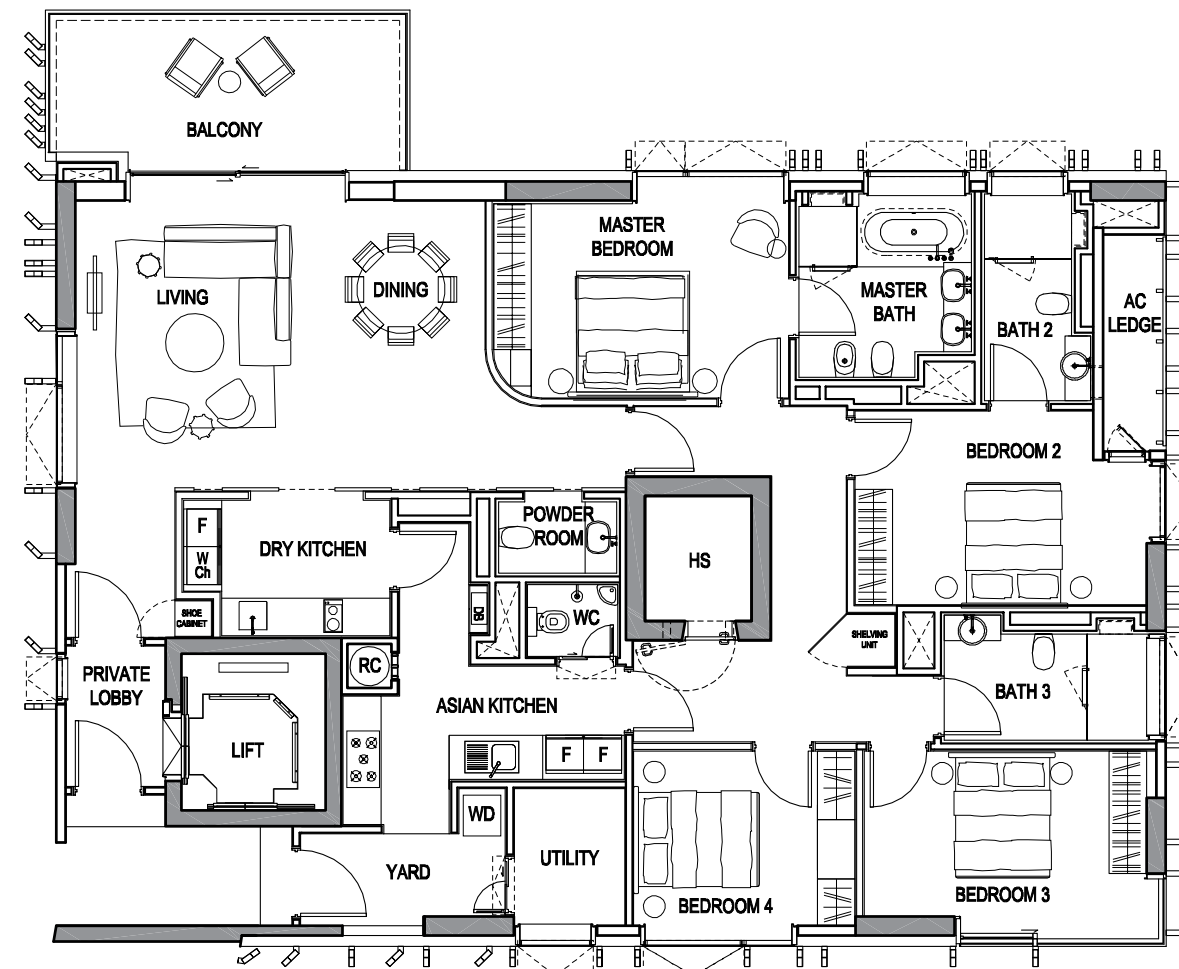
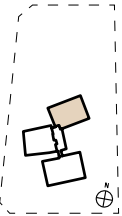


Lower

Type C2-b2

Area: 210 sq m / 2,260 sq ft

#19-03 to #23-03



Upper



The Mark Of Sustainable Luxury Living

Sustainability has always been a cornerstone of the YTL Group to improve the natural environment for future generations.

3 Orchard By-The-Park, has embraced sustainability with green technologies that redefine eco-luxury living to achieve the BCA Green Mark Gold^{PLUS} Award, making it truly the mark of a masterpiece.

Green Urban Design

- Good Thermal Performance
- Sun shading and good ventilation to reduce energy consumption

Energy Efficiency

- Energy efficient air-conditioning systems provided to all residences
- Built-in motion sensors at staircases, common toilets and lift lobbies
- Lifts equipped with a Variable Voltage Variable Frequency (VVVF) drive and “sleep mode function”
- Provision of Energy Monitoring Meters and ecoplugs to all units
- Energy saving lightings in all common areas
- Use of ductless fans and CO sensors for carpark

Water Efficiency

- The use of water-saving fixtures within the development
- Water efficient washing machines provided to all residences
- Provision of private water meters to monitor water usage for swimming pools and common areas
- Automatic drip irrigation system with rain sensor to at least 50% of landscaped area

Environmental Protection

- Use of Green Cement and Recycled Aggregate Concrete (RCA) for structural elements
- Use of sustainable products (certified by local certification bodies such as Singapore Green Building Council and Singapore Environment Council) including:
 - Waterproofing
 - Engineered external wood decking
 - Recycled ceiling boards
 - Drywall partitions
 - Landscaped drainage cells
 - Exterior wall paints
 - Precast concrete panels
 - Use of low Volatile Organic Compound (VOC) paints for internal walls

Waste Management

- Use of compost recycled from horticulture waste for landscaped areas
- Provision of recycling bins

Other Green Features

- Provision of Green Lot with vehicle charging station
- Provision of sheltered bicycle parking lots
- Extensive landscaped area and conservation of trees within the development



Shaping Cityscapes, Globally.

YTL Corporation Berhad, incorporated in 1955 and today, is a conglomerate with a diversified portfolio of businesses spanning a large range of industries – utilities, construction and cement, telecommunications and transport infrastructure, real estate and luxury hospitality. Serving 12 million customers across Asia, Australia and Europe, it has been listed on Bursa Malaysia since 1985.

With a combined market capitalisation of about US\$6.5 billion, it is one of the largest diversified groups listed on the Bursa Malaysia, and the first non-Japanese Asian company to be listed on the Tokyo Stock Exchange.

YTL Corporation’s residential property development activities are undertaken through YTL Land & Development Berhad (YTL Land).

Having won multiple regional and international awards including the FIABCI Prix d’Excellence Award, YTL Land has built up an excellent track record of building high quality houses, condominiums and mixed-use properties with attractive and innovative designs. As a leader in sustainability practices, the company incorporates green designs into the engineering and architecture of their developments, promotes environmental renewal and cultivates sustainable ideas and habits within their communities.

With a growing land bank of more than 2,000 acres across Malaysia, YTL Land’s celebrated portfolio includes the high-profile masterplan of the 294 acre Sentul in Kuala Lumpur, Malaysia, as well as the award-winning Sandy Island and Kasara, the Lake villa collections in Sentosa Cove, Singapore’s exclusive gated marina community.

YTL Hotels, the hospitality arm of YTL Corporation, has an impressive portfolio of 30 luxury hotels and resorts in 8 countries, including the highly acclaimed Pangkor Laut Resort, The Majestic Kuala Lumpur, Ritz Carlton Kuala Lumpur and JW Marriott Hotel Kuala Lumpur in Malaysia; Spa Village Resort Tembok, Bali in Indonesia; Sydney Harbour Marriott Hotel in Australia and MUSE Saint Tropez in France.

YTL’s illustrious track record also extends to the world-class ski resort, Niseko Village, in Hokkaido (which won Best Ski Resort in Japan) and the recent additions of The Gainsborough Bath Spa, set in the heart of Bath, a World Heritage Site; The Glasshouse

Hotel; Monkey Island and The Academy Hotel. More upcoming luxury projects in the pipeline include The Ritz Carlton Hotel in Koh Samui, The Ritz Carlton Reserve, W and Edition Hotels in Niseko.

In the premium lifestyle arena, YTL owns the luxurious Starhill Gallery in Kuala Lumpur, housing 70 of the world’s best luxury brands in its seven storey retail mall and the highly-acclaimed Eastern & Oriental Express train, which runs from Singapore up through the length of peninsular Malaysia and southern Thailand to Bangkok.



Kasara, Sentosa, Singapore



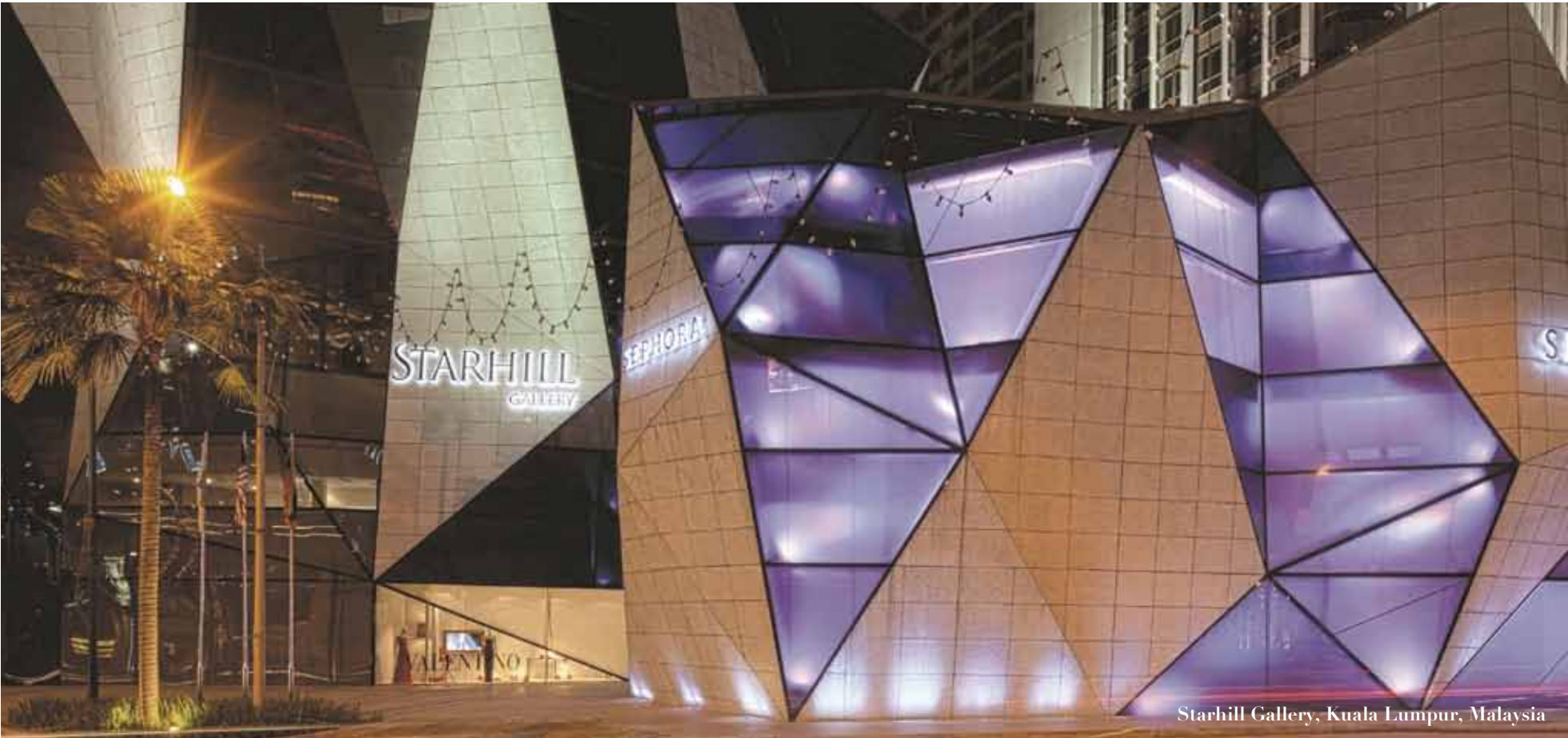
Sandy Island, Sentosa, Singapore



The Ritz Carlton Hotel, Koh Samui, Thailand



MUSE, Hotel De Luxe, St. Tropez, France



Starhill Gallery, Kuala Lumpur, Malaysia



Swatch Art Peace Hotel, Shanghai, China



DISCLAIMER
While all reasonable care has been taken in preparing this brochure, the developer and its agent(s) shall not be held responsible for any inaccuracies or omissions. All statements are believed to be correct at time of print. They shall not be regarded as statements or representations of facts and are not intended to form any part of the contract for the sale of the units. Visual representations including models, drawings, illustrations, photographs, videos and renderings portrayed are artistic impressions only and are not to be taken as representations of fact. Floor areas and measurements are approximate only and are subject to final survey at the absolute discretion of the developer or if required under the law. All information, plans and specifications are current at the time of print and are subject to changes as may be required or approved by the developer and/or the relevant authorities.

